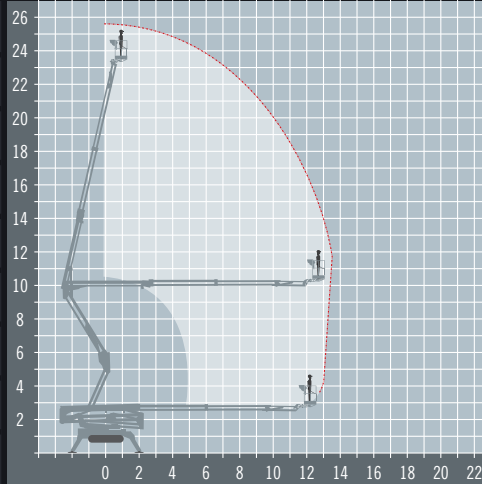


HINOWA LL2614

Tracked Boom Lift

REACH HEIGHT	25.7 m
PLATFORM HEIGHT	23.7 m
UP AND OVER	10 m
HORIZONTAL REACH	13.75 m
STOWED HEIGHT	1.98 m
DEPLOYED WIDTH	3.98 m
PLATFORM SIZE	1.48 x 0.69 m
WEIGHT	4,365 kg
LIFT CAPACITY	230 kg



Stowed travel size is 6.35 x 0.99 m (20' 10" x 3' 3")

240V MAINS/DIESEL POWERED
240v mains with diesel engine for travel

TRACKED FOR ROUGH TERRAIN
Perfect when low ground pressure is needed

LEVELLING STABILISERS
Levels the machine for use on uneven ground

EXTENDING AXLES
Axles extend for use and retract for transport

OUTDOOR RATED
Wind rated for outdoor use

IPAF 3a
Requires IPAF category 3a

The Hinowa LightLift 26.14 combines extraordinary performance enclosed in a compact machine that is just 990mm wide and less than 6 metres in length thanks to the detachable cage. It is useful in a wide range of operations including tree care, facility management and general maintenance tasks.

A range of extra's for 'Hire or Purchase' designed to give you the GTAdvantage™

STOP NUISANCE BORROWING WITH GTA SECURE™

PROTECT SENSITIVE GROUND WITH 'GROUND GUARDS'

DOUBLE POINT HARNESSES TO KEEP YOU SAFE AT HEIGHT

SPREAD THE LOAD WITH THE RIGHT SIZE SPREADER PLATES

STAY FULLY CHARGED WITH TRANSFORMERS AND LEADS

FUEL BOX REFUEL ON-SITE THE EASY WAY WITH A FUEL BOX!

Find out more about the 'GTAdvantage' extras at gtaccess.co.uk



THE POWER IN ACCESS™